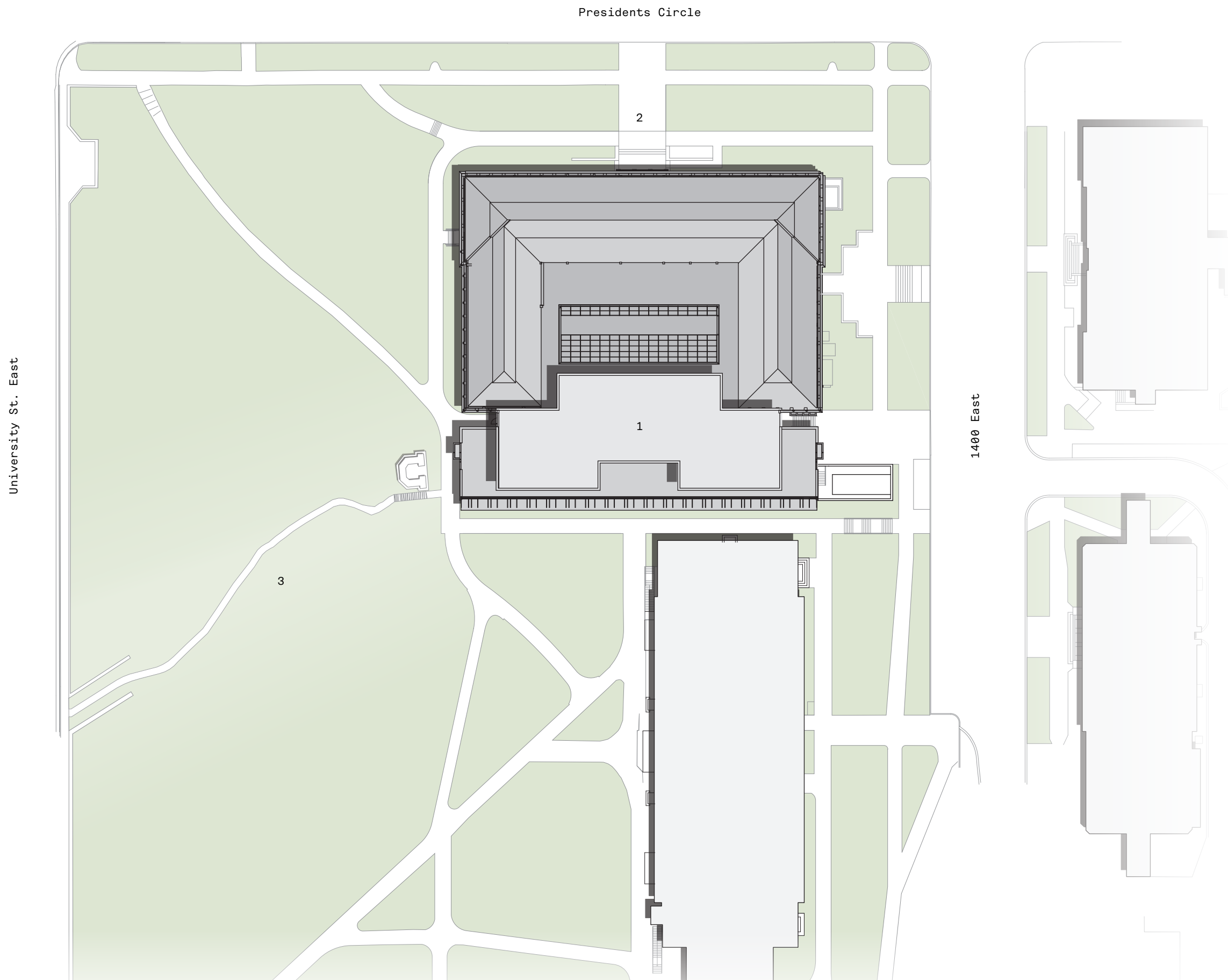
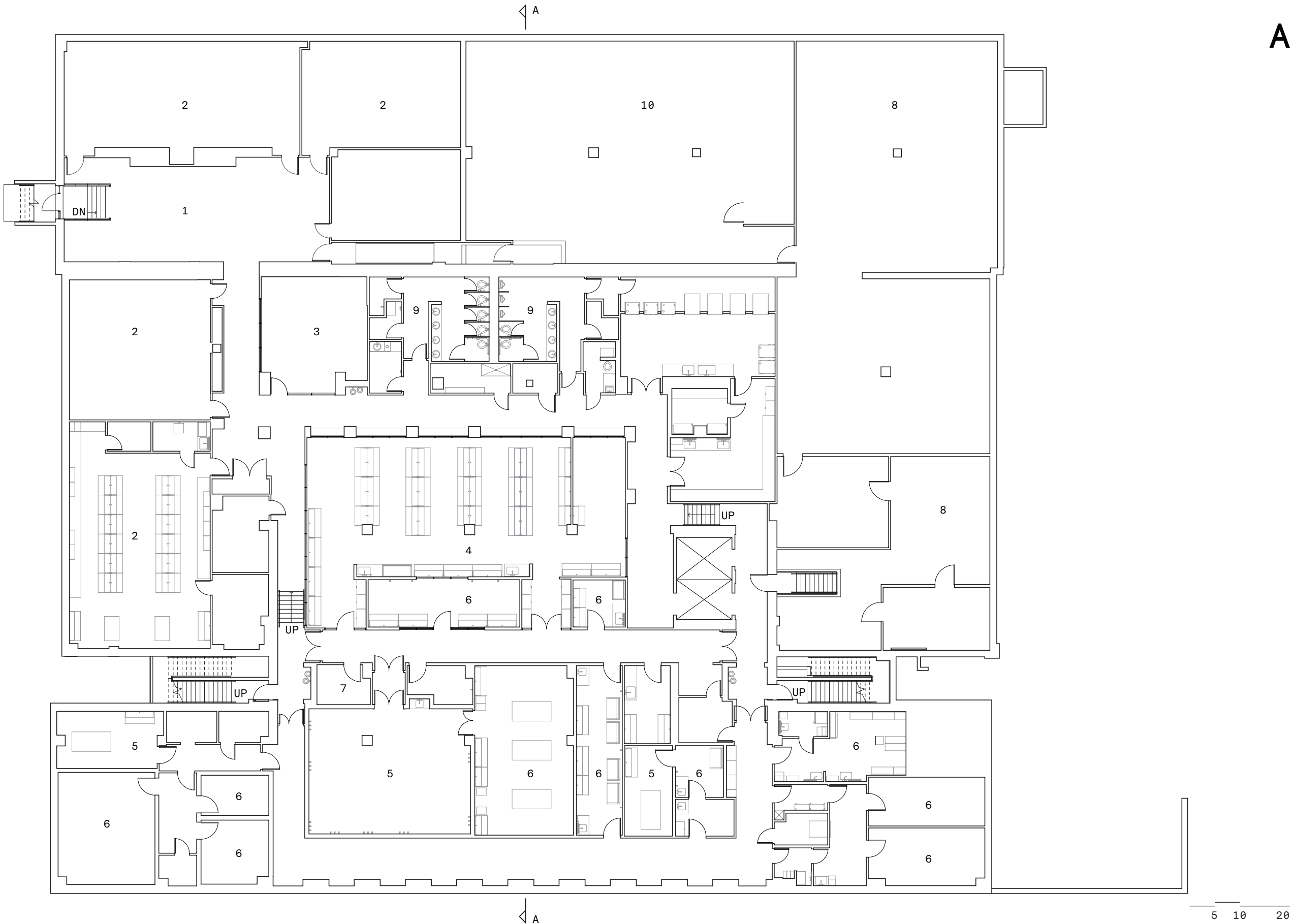


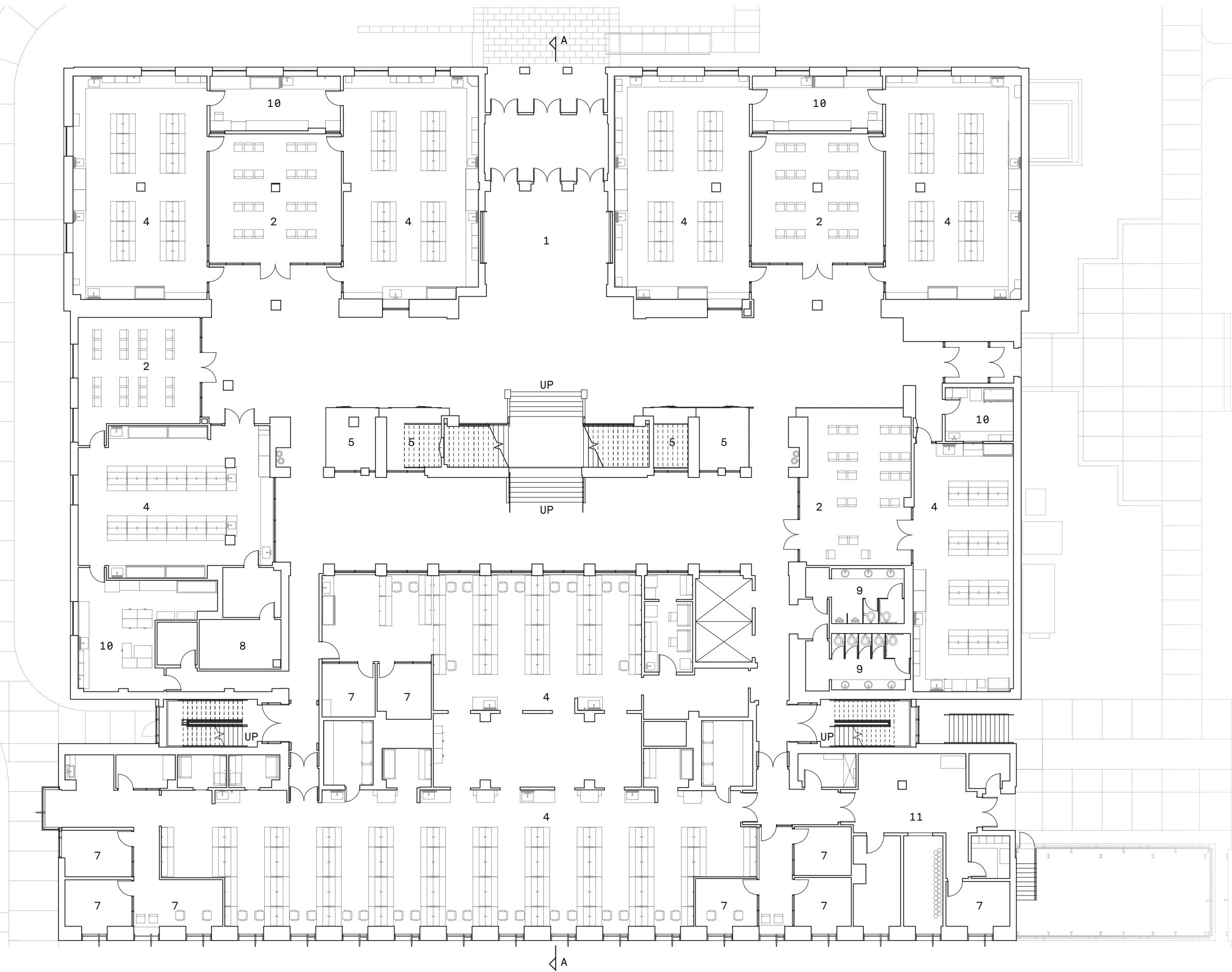
- 1 Crocker Science Center
- 2 Main Entry
- 3 Cottam's Gulch

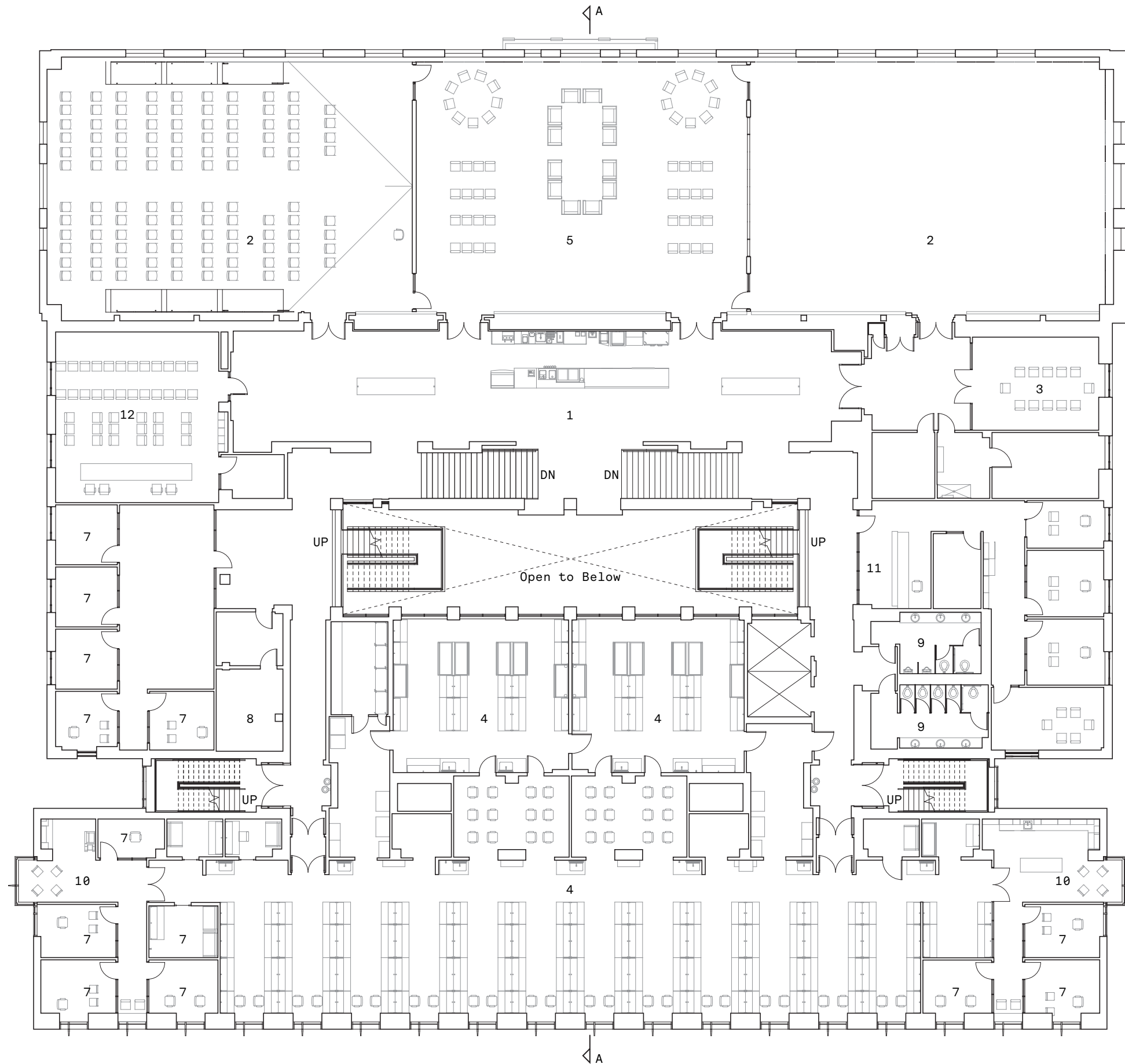


- 1 Lobby
- 2 Classroom
- 3 Conference Room
- 4 Common Equipment Room
- 5 Instrument Room
- 6 Lab Room
- 7 Office
- 8 Elec. / Mech. Room
- 9 Restrooms
- 10 Storage



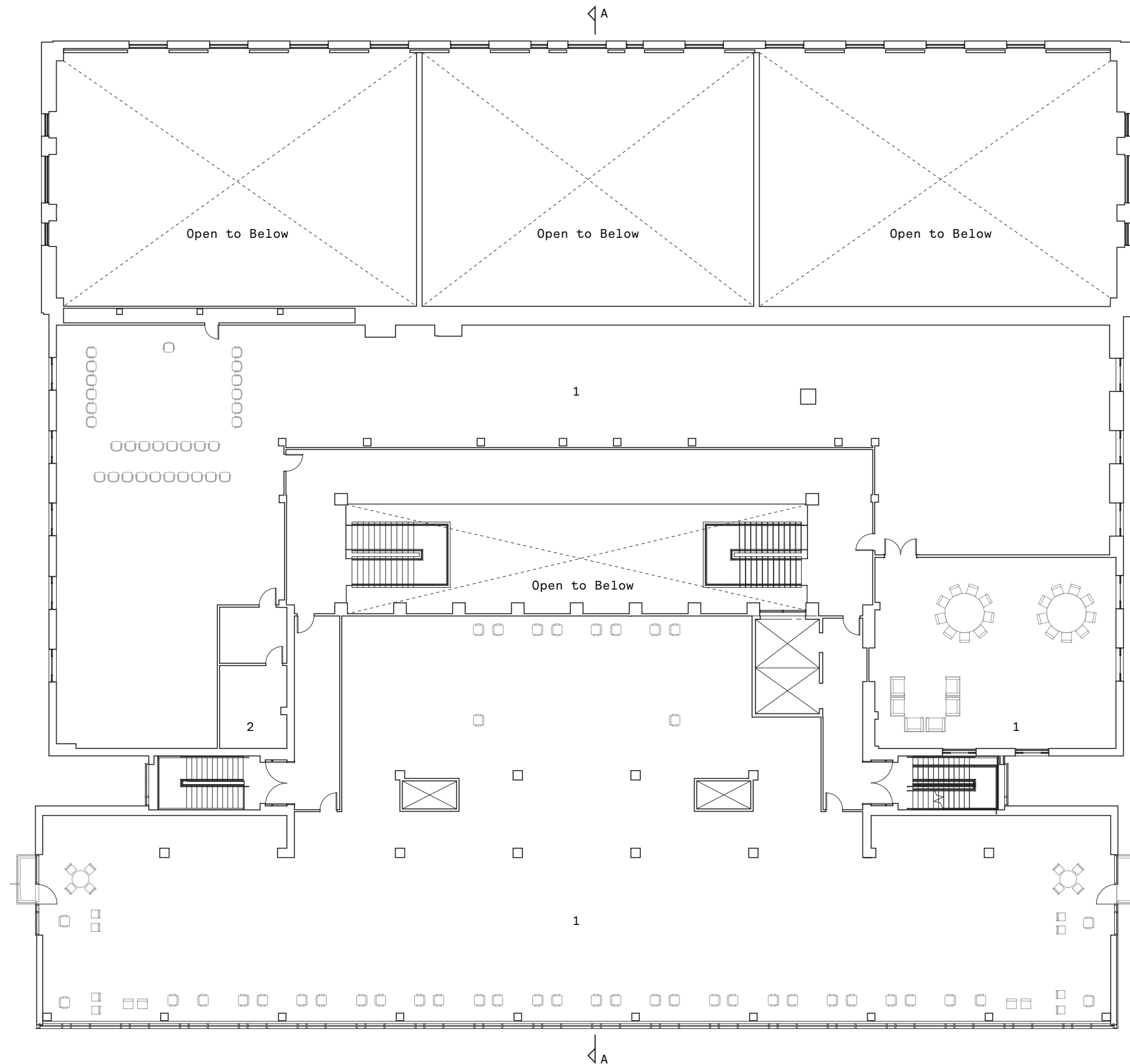
- 1 Historic Lobby
- 2 Classroom
- 3 Conference Room
- 4 Lab
- 5 Study
- 6 Lab Room
- 7 Office
- 8 Elec. / Mech. Room
- 9 Restrooms
- 10 Prep Room
- 11 Receiving





- 1 Cafe
- 2 Lecture Room
- 3 Conference Room
- 4 Lab
- 5 Study Room
- 6 Lab Room
- 7 Office
- 8 Elec. / Mech. Room
- 9 Restrooms
- 10 Break Area
- 11 Advising
- 12 Tutoring Center





1 Scheduled Space  
2 Elec. / Mech. Room

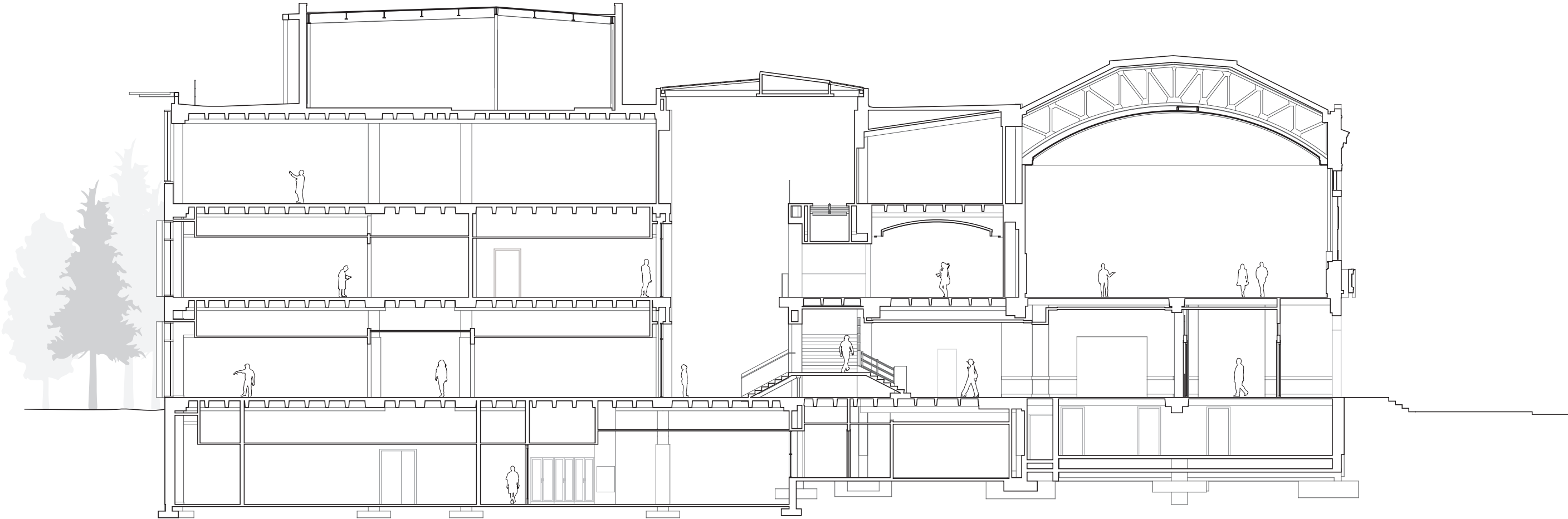
N

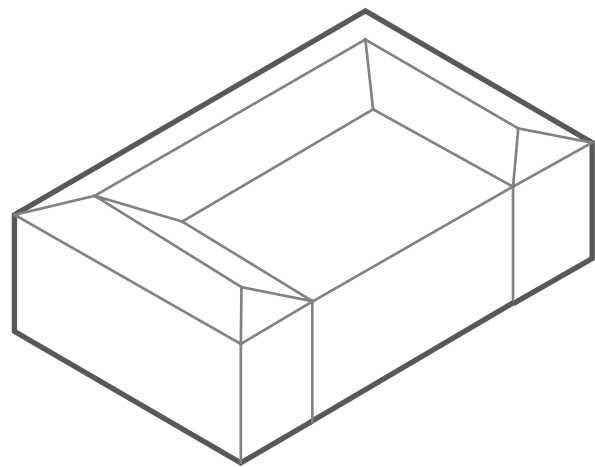
Level 3

University of Utah Crocker Science Center

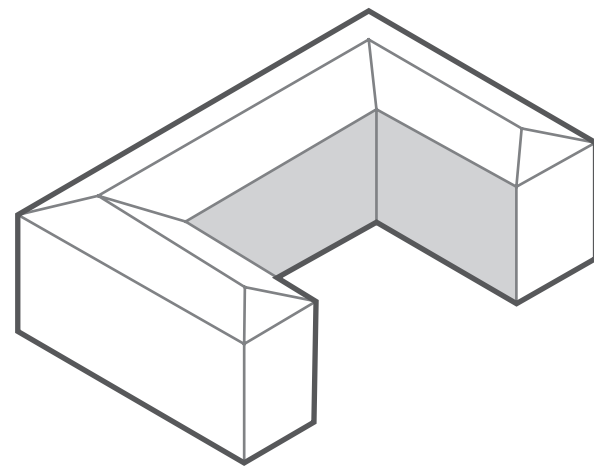
2018

5      10      20

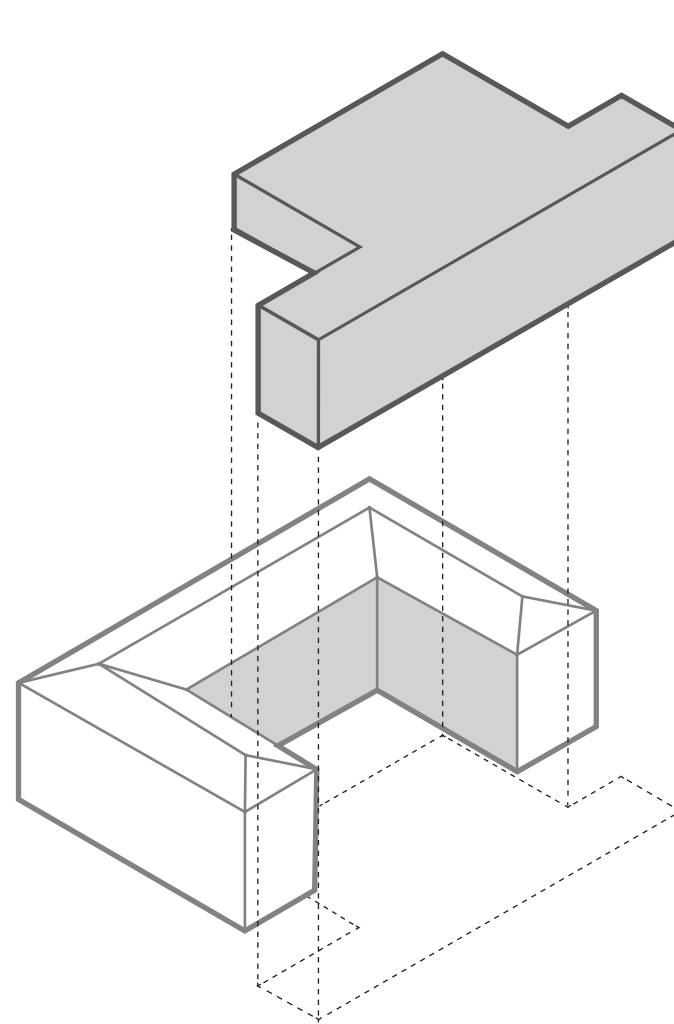




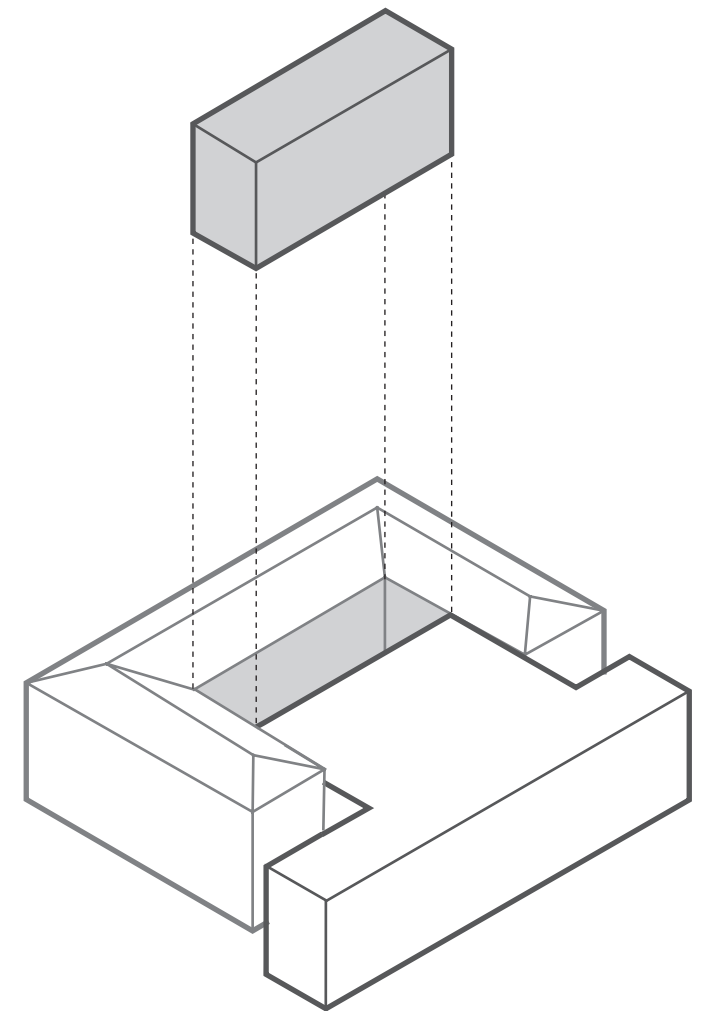
The 1935 historic George Thomas Building originally housed the University's Library.



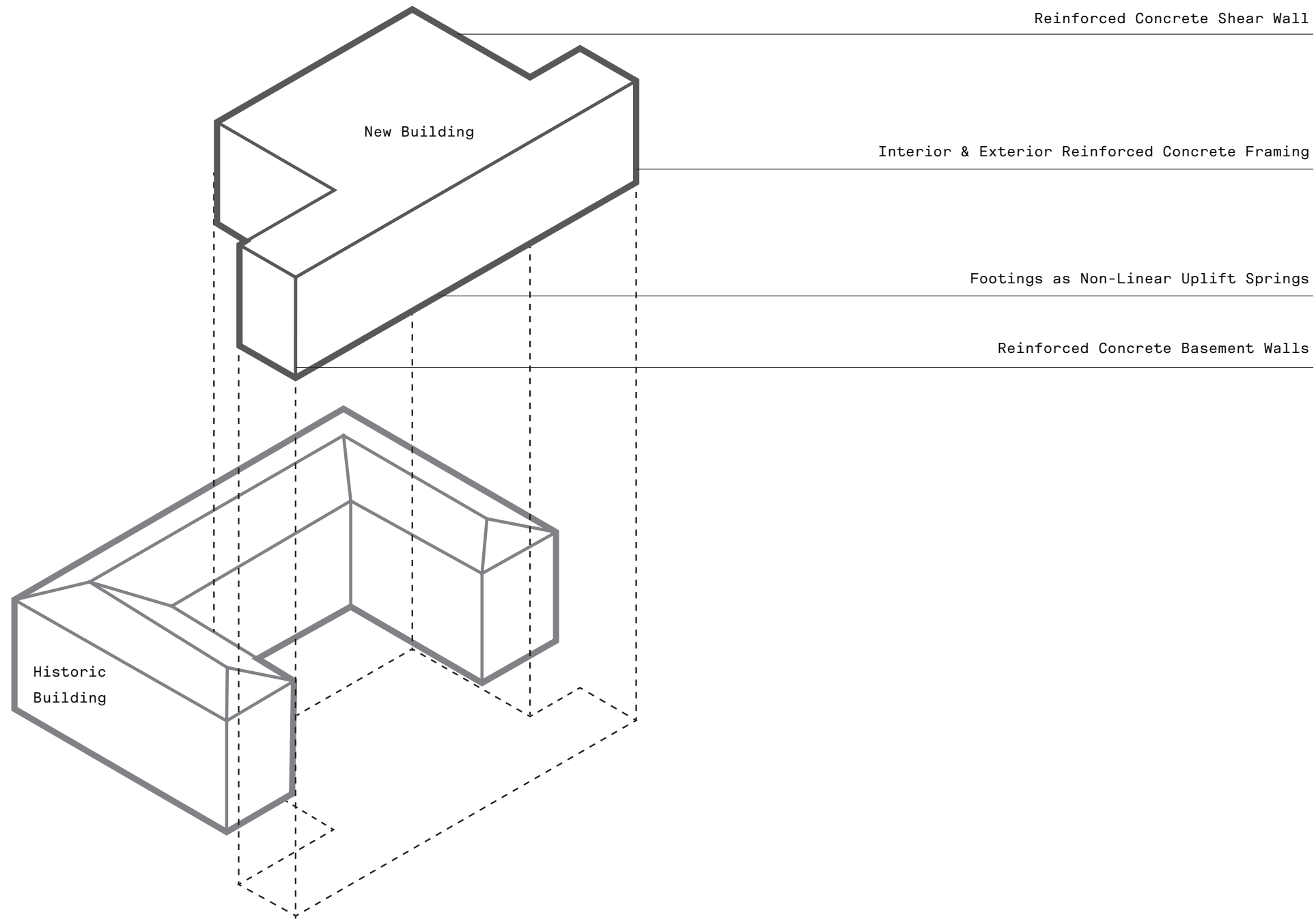
The renovated part of the historic structure is now home to the College of Science's undergraduate classrooms, teaching labs, study rooms, and administration.



The Eyring Center for Cell and Genome Science Center (CCGS) occupies the majority of the new addition.

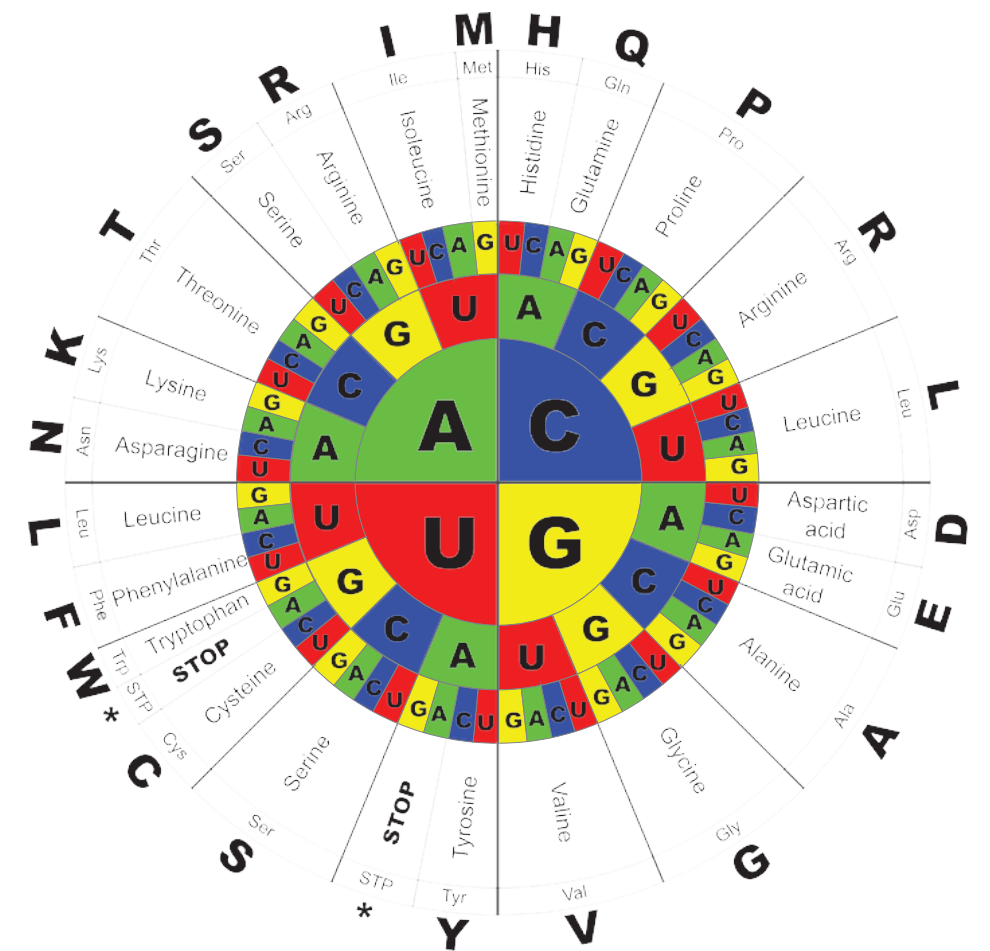
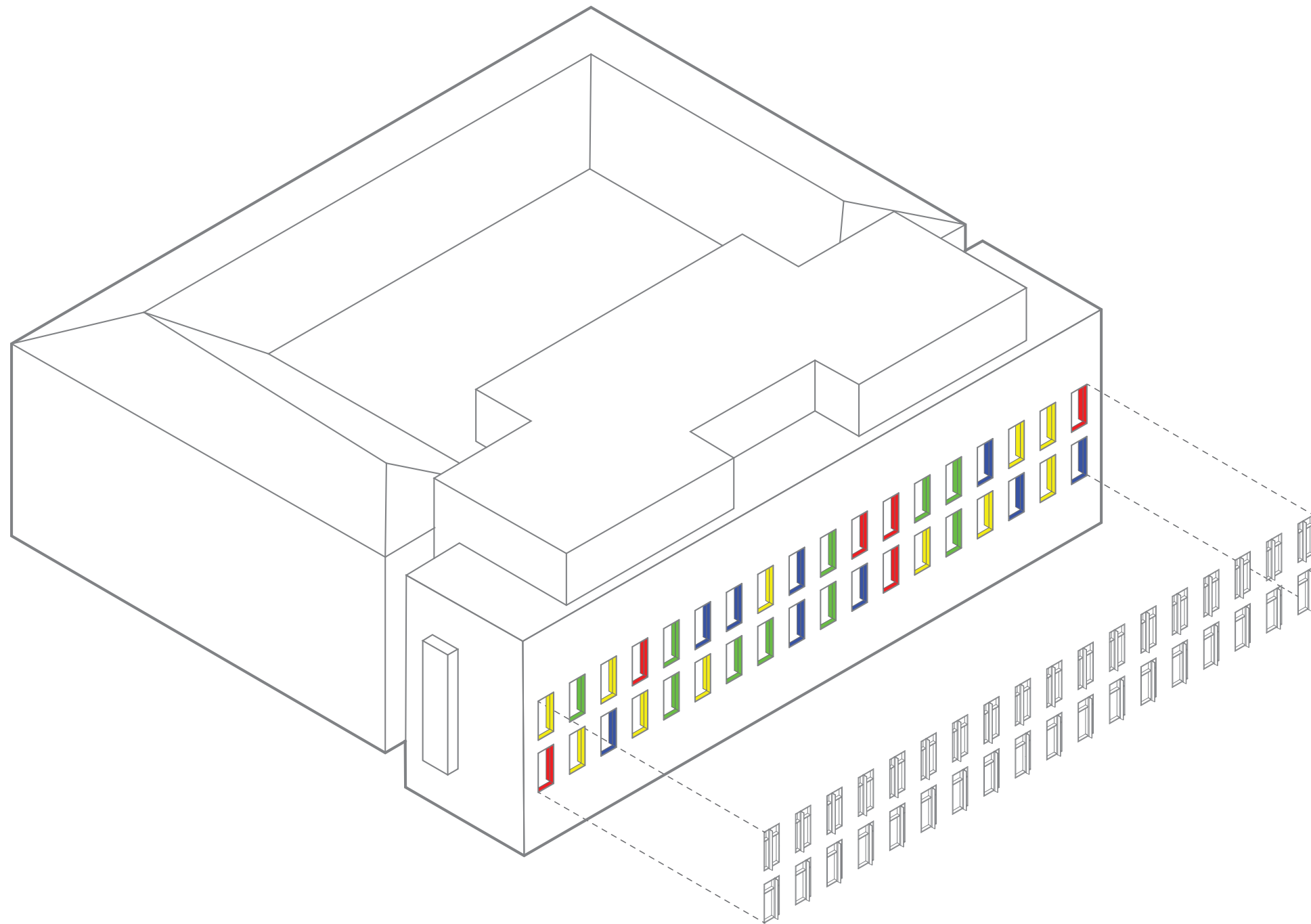


The central atrium space acts as a transparent connection to the classroom spaces and lab space, enhancing the central idea of building as teacher.





E D  
A



The interior walls on the southern laboratory spaces are painted to spell out a phrase according to the colors used in fluorescent DNA sequencing (above). Components of the genetic code are represented by a letter and a color. The combination of three colors in a row, read from the center of the wheel and moving out, equal one roman character. As an example, the three colors in the upper left side of the southern facade (yellow, green, yellow) equal the letter E. The next letter will come from the colors red, green, blue. The upper floor and lower floor both codes for a different peptide.